



How to Patch DLL Files

Overview:

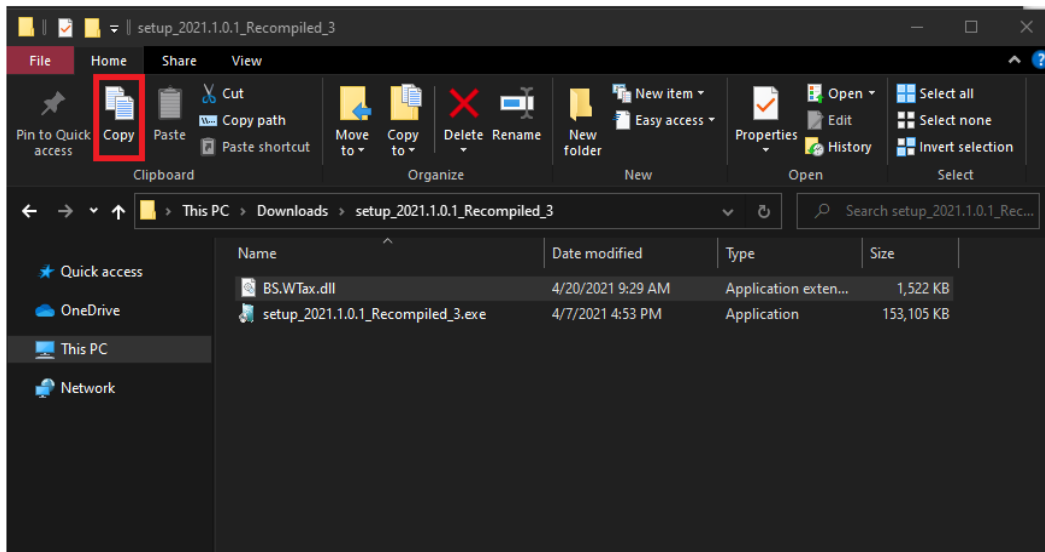
DLL files are the extension files included in the QNE folder. There will be instances that you may be receiving this type of file. The said file is considered as a quick fix and is being use to resolve certain issue encountered in the system.

Procedure (s):

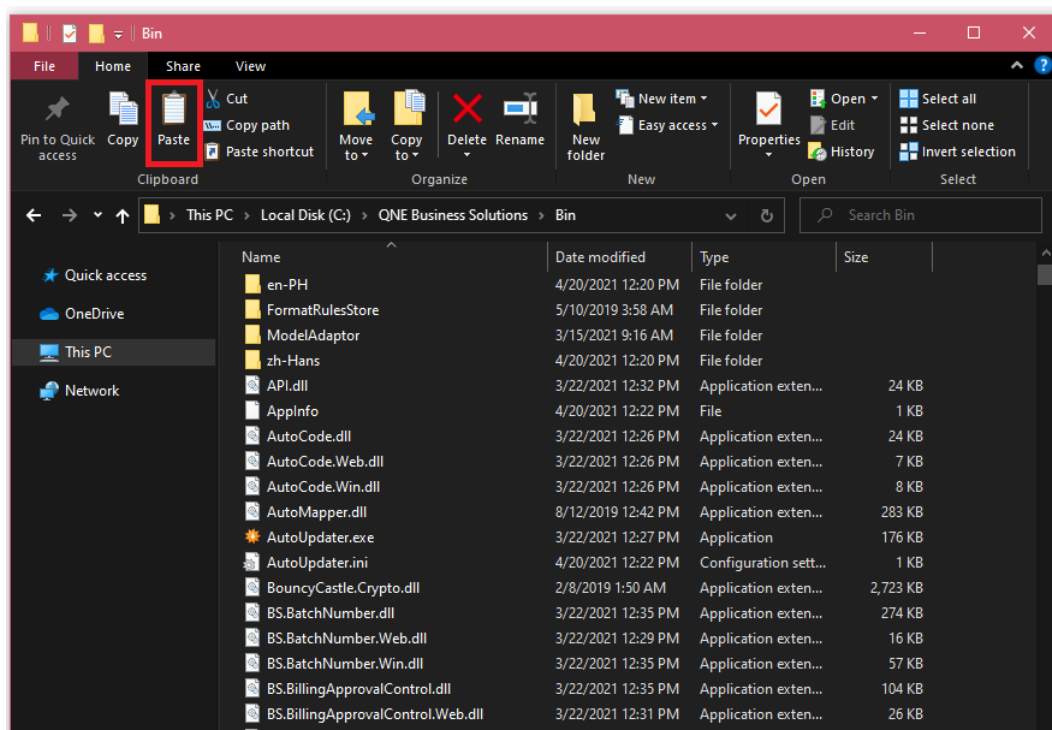
1. Click  close the application



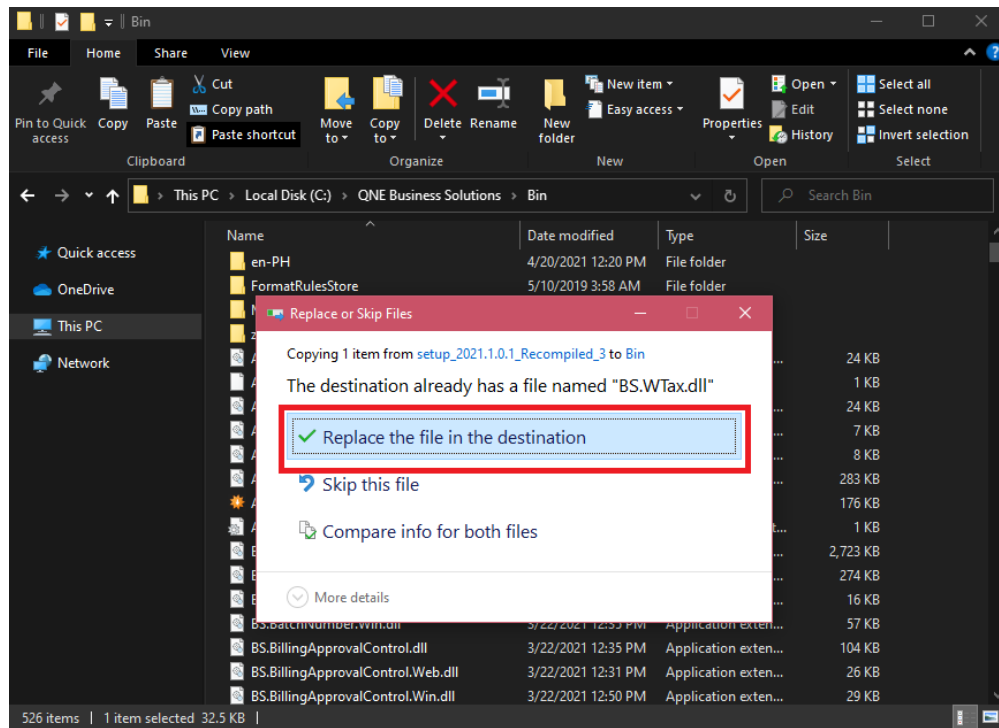
2. Select the file with extension .dll then Copy



3. Go to QNE System Installed folder C:\QNE Business Solutions\Bin



4. Choose ☒ *Replace the File in the destination*, to apply the new DLL file



5. Open the system and check whether the raised issue still persists

NOTE:

For further concerns regarding this matter, please contact support to assist you or create ticket thru this link <https://qnesupportph.freshdesk.com>