



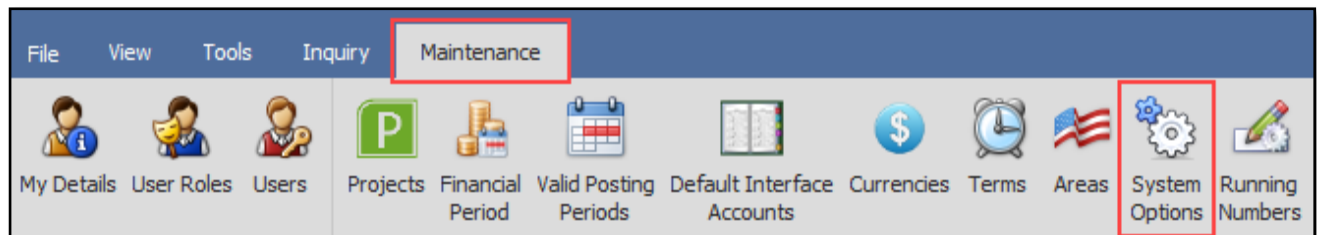
How to Restrict Users from Multiple Terminal Logins

Overview:

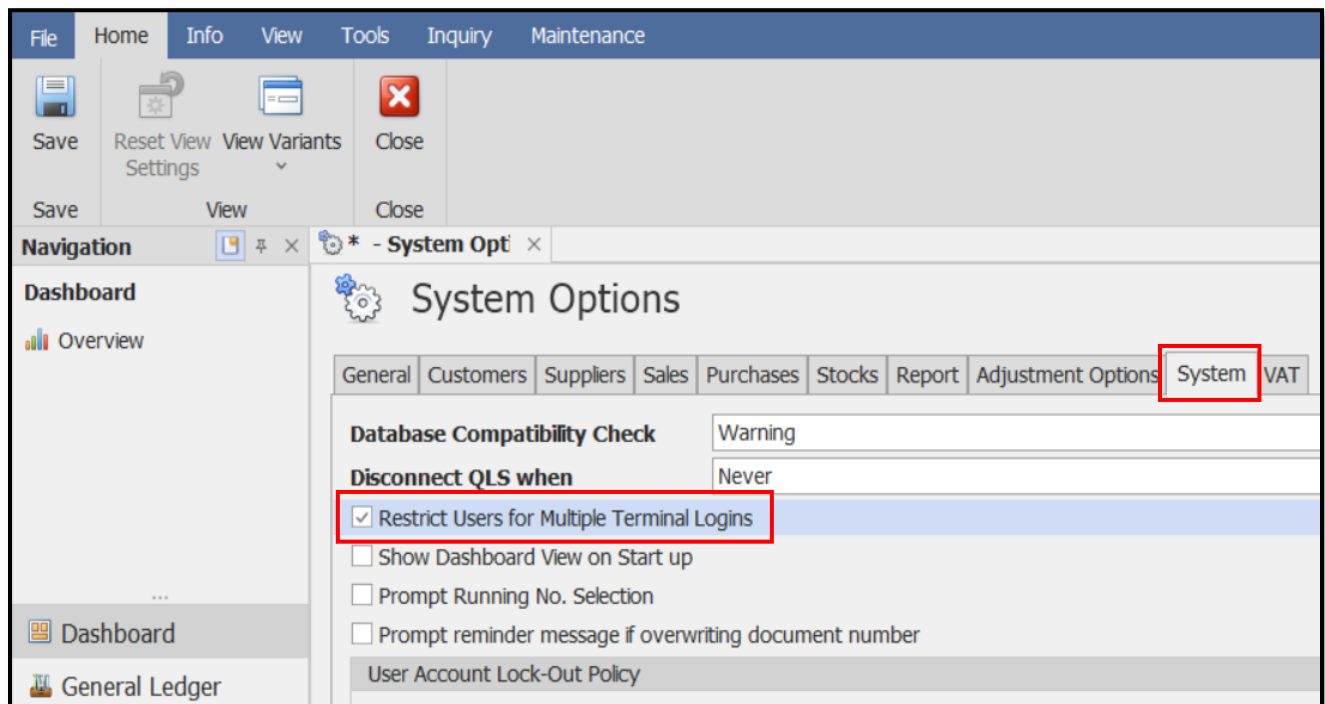
In compliance with BIR CAS' Standard Functional and Technical Requirements - "Users are restricted from being active on multiple terminals at the same time with the same user identification code." The QNE system has an option for this restriction.

Procedure:

1. Log in to the database or company you want to put this restriction on. Go to *Maintenance > System Options*.

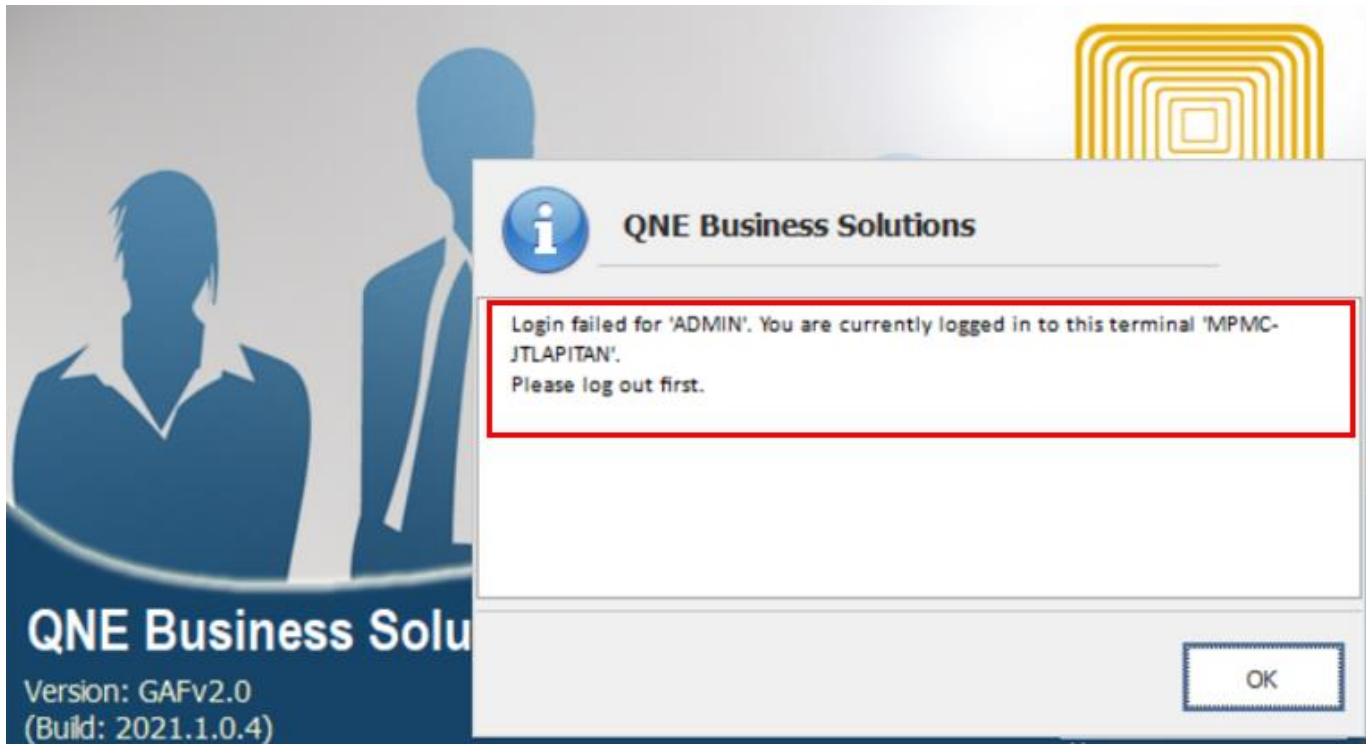


2. Click the System tab, tick the 'Restrict Users for Multiple Terminal Logins' and click Save.



Application:

If a particular user account is already logged in to the database in one terminal or workstation and also tries to log in to the same database in another workstation, the system will not allow that user to log in and will display a dialog box like the below.



Note: This option is only available from version 2021.1.0.4 and higher.



For further concerns regarding this matter, please contact support to assist you or create ticket thru this link <https://support.qne.com.ph>